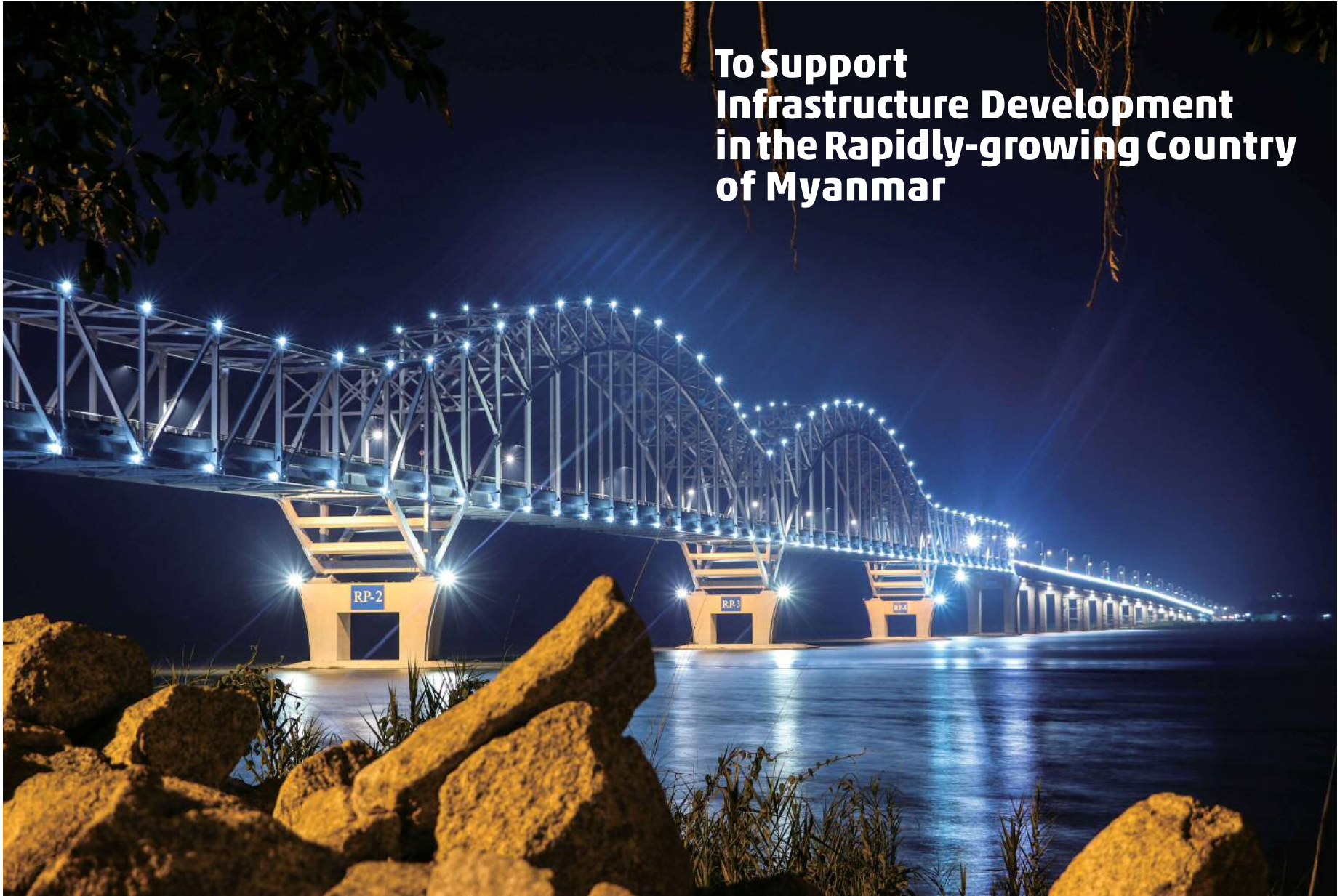


To Support Infrastructure Development in the Rapidly-growing Country of Myanmar



Corporation Philosophy and Greeting

Corporate Vision

1. Contributing to upgrade of infrastructure within the Republic of the Union of Myanmar and Bengal Rim with the up-to-date technology and know-how, to meet the needs of the countries.
2. Contributing to society and satisfaction of the Company staff through business activities.

Corporate Values

Sincerity

Flexibility

A Challenging Spirit

Welcome to J&M Steel Solutions Co., Ltd.

J&M Steel Solutions Co., Ltd. was established to produce the high quality steel structures in Myanmar with the high technology provided by Japanese leading Engineering company JFE Engineering Corp. In our name "J&M Steel Solutions", "J" stands for "Japan" and "M" stands for "Myanmar".

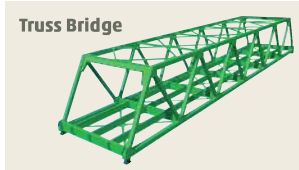
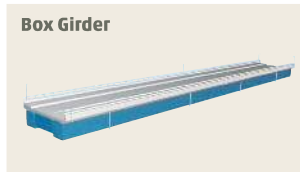
We will take a role for the development of Myanmar in the field of infrastructure, like a "Linking Bridge" between both countries.



AKENO Wataru
Managing Director



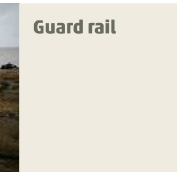
Steel Bridges



Marine Structures



Others



Our Products in Myanmar and Bengal Rim



Myanmar Bridges

1 Myaung Mya Bridge
Deck Truss
MOC
2019
1,350t

2 Chau Sone Bridge
Truss & Box Girder
MOC
2017
3,400t

3 Da Let Chaung Bridge
Box Girder
MOC
2018
700t

4 Htee Gyaint Bridge
Arch & Truss
MOC
2015
3,900t

5 Khamti Bridge
Truss
MOC
2018
2,000t

6 Myit Nge Railway Bridge
Box Girder
Myanma Railways
2016
740t

7 Kokkine Flyover
Box Girder
Yangon City Development Committee
2016
1,250t

ODA

9 Gumti 2nd Bridge
Box Girder
ODA (Road and Highway Development, Ministry of Road Transport and Bridge, Bangladesh)
2018
9,800 t



8 Denagama Bridge
Box Girder
ODA (Road Development Authority of Sri Lanka)
2016
265t

4 Kelani Bridge
Box Girder
ODA (Road Development Authority of Sri Lanka)
On Going
9,000t

Marine Structures

6 Pansoedan Ferry Terminal
Jetty
Myanmar Port Authority
2016
486t

7 Thilawa Jacket
Jacket
ODA (Myanmar Port Authority)
2017
4,800t

MOC: Ministry of Construction of Myanmar Government

Manufacturing Flow

1 Design



2 Cutting



3 Welding



4 Pre Assembling



5 Inspection



6 Trial Assembling



7 Painting



8 Shipping



Factory Layout



- ① 1st Factory
- ② 2nd Factory
- ③ Painting Shop
- ④ Material Stock Yard
- ⑤ Trial Assembly Yard
- ⑥ Stock Yard

Capacity	30,000 ton/year
Land Area	95,000m ² (approx.)
Factory Area	13,000m ² (approx.)

Main Facilities & Machines



NC Plasma Cutting Machine



NC Drilling Machine



8 Torches Gantry Welding Machine



Dual-Column Bandsaw



Gantry Crane



Painting Shop

Qualified Staff

Qualifications		Numbers
MES MIMechE JWES	WE	9
	AWE	45
NSSA Qualified Welder	GMAW	150
	FCAW	55
AWS	Qualified Welder	76
	Qualified Tacker	85
ASNT Level 2	FCAW	35
		3

- MES : Myanmar Engineering Society
- MIMechE: Myanmar Institution of Mechanical Engineers
- JWES : Japan Welding Engineering Society
- AWE : Associate Welding Engineer
- WE : Welding Engineer
- NSSA : National Skills Standard Authority
- AWS : American Welding Society
- GMAW : Gas Metal Arc Welding
- FCAW : Flux Cored Arc Welding
- ASNT : American Society For Non Destructive Testing

Company Profile

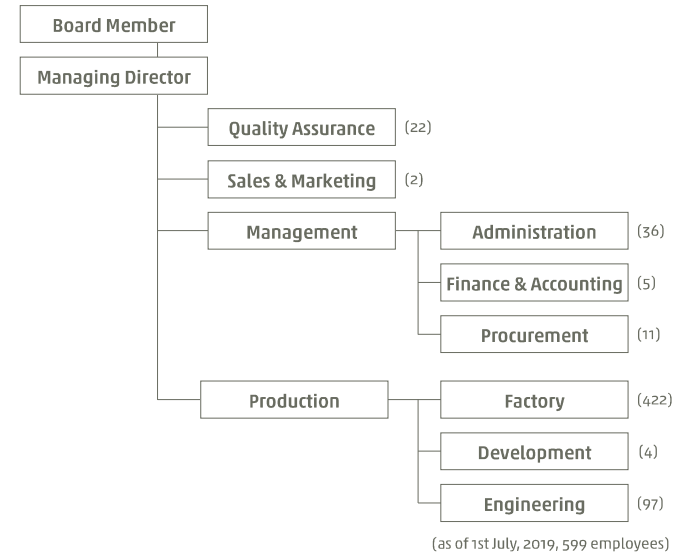
Company Profile

Name : J&M Steel Solutions Corporation Limited
Company Registration No : 101652092
Established : November, 2013
Capital : 20,190,000 USD
Shareholders : JFE Engineering Corporation : 60%
 Ministry of Construction of Myanmar government : 40%
Products : Steel Bridge, Marine Structures and others
Number of Employees : 599 (as of 1st July, 2019)

Production Record
(Tons, Job order Basis)

2014	2015	2016	2017	2018
9,000	21,700	18,500	15,700	15,500

Organization Chart



Certifications

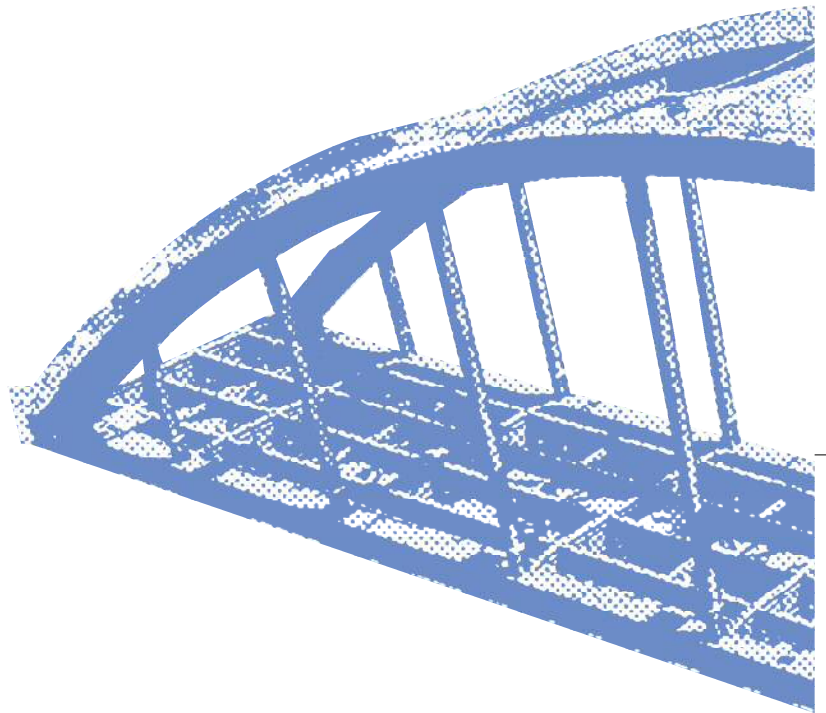


Certificate of Incorporation and Registration



ISO 9001-2015 (16 May, 2017)





Location



Address : No.237, Shukhinthar Mayopat Road,
Block No.10, Thaketa Township,
Yangon, Myanmar

TEL : +95-1-94101234